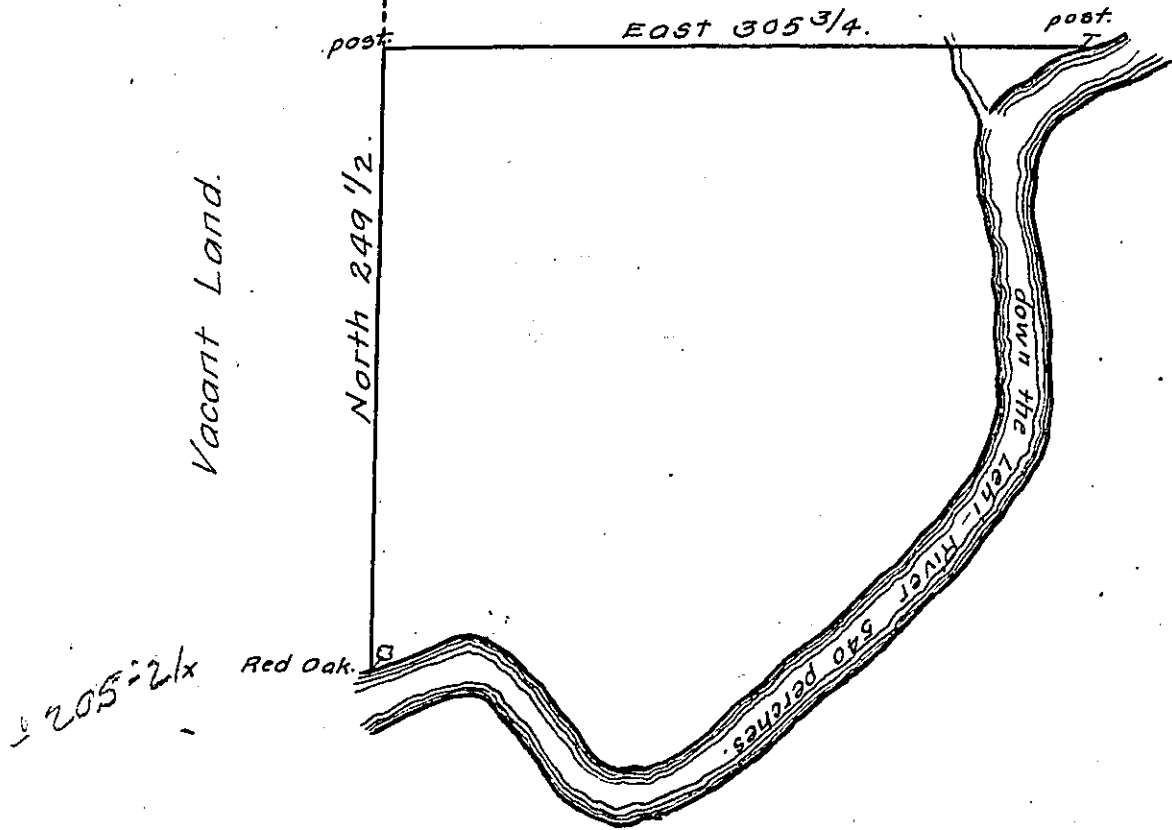


Darby Leary.  
A 58-274



The bearing and dist<sup>s</sup>.  
down Lehi-are.

- ✓ 1. S. 68. W. .... 38.
  - ✓ 2. S. 20. W. .... 40.
  - ✓ 3. S. 15. E. .... 56.
  - ✓ 4. S. 3. E. .... 31.
  - ✓ 5. S. 3. W. .... 11.
  - ✓ 6. S. 8. W. .... 20.
  - ✓ 7. S. 40. W. .... 22.
  - ✓ 8. S. 42. W. .... 18.
  - ✓ 9. S. 53. W. .... 129.
  - ✓ 10. S. 60. W. .... 22.
  - ✓ 11. S. 80. W. .... 27.
  - ✓ 12. N. 30. W. .... 56.
  - ✓ 13. N. 77. W. .... 30.
  - ✓ 14. S. 70. W. .... 40
- 540.

By virtue of a warrant dated the 11<sup>th</sup>. September, 1784 Surveyed  
the 29<sup>th</sup>. October, 1788 to William Bull the above described tract  
of Land situate on the West of Lehi in Northampton County contain-  
ing three hundred and eighty six Acres one hundred perches and  
the Allowance of six & Cent. &c.

John Lukens, Esq<sup>r</sup>,  
Surveyor General. }

& Geo. Palmer. -

IN TESTIMONY that the above is a copy of the original remaining on file in  
the Department of Internal Affairs of Pennsylvania, made  
conformably to an Act of Assembly approved the 16th day of  
February, 1833, I have hereunto set my Hand and caused  
the Seal of said Department to be affixed at Harrisburg,  
this twenty ninth day of August, 1911.

*Henry Howe*  
Secretary of Internal Affairs.